



# VESDA LaserSCANNER™

Listings/Approvals:  
FM, LPC, SSL, UL, ULC, Vds

## FEATURES

- Individual Pipe Identification
- Adaptive Scan Threshold
- Wide Sensitivity Range
- Laser Based Smoke Detection
- VESDAnet™ Communication
- 4 Alarm Levels per Sector
- High Efficiency Aspirator
- Dual Stage Air Filter
- Easy to Replace Air Filter
- 7 or 12 Programmable Relays Option
- AutoLearn™
- Referencing
- Event Log
- Recessed Mounting

The LaserSCANNER is similar to the standard LaserPLUS detector, but also includes a valve mechanism in the inlet manifold and software to control the airflow from the four VESDA sectors (pipes). This configuration enables a single VESDA zone to be divided into four separate sectors, for example, distinguishing between separate voids within a room.

## How It Works

The LaserSCANNER draws air from all sectors in use. If the smoke level reaches the Adaptive Scan Threshold, the LaserSCANNER quickly scans each pipe to identify which pipe is carrying smoke. If more than one pipe is transporting smoke, the sector with the highest smoke concentration is designated as the First Alarm Sector (FAS).

Once Fast Scan is completed and the FAS identified, the LaserSCANNER continues to closely monitor all four sectors (pipes) to monitor fire growth and maintain full protection of the area.

There are four alarm levels (Alert, Action, Fire 1 and Fire 2) for each sector (pipe) and the sensitivity for each alarm level can be set to ensure the optimum alarm thresholds are applied for each sector.

## The LaserSCANNER Display

The LaserSCANNER display has a bar graph to indicate the overall smoke level, alarm threshold and fault indication. The bar graph displays the individual sector smoke levels during the scanning sequence. There is an extra LED to indicate that a First Alarm Sector (FAS) has been identified and an extra function to the Silence Button to allow for Manual Scan to be initiated.

The LaserSCANNER display module can be mounted into the LaserSCANNER front cover or remotely into a 19in subrack or a Remote Box.

## Relay Options

The LaserSCANNER detector can be fitted with a programmable 7 or 12 relay Termination card. Relays may be mounted in a remote box or in a 19in subrack.

## VESDAnet™

The status of the detector, and all alarm, service and fault events, are transmitted to displays and external systems via VESDAnet, VESDA's fault tolerant communications protocol. The VESDAnet loop provides a robust bi-directional communication network between devices, even allowing continued operation during single point wiring failures. It also provides system programming from a single location and forms the basis of the modular nature of the VESDA system.

## AutoLearn™ and Referencing

The LaserSCANNER has both the AutoLearn™ and Referencing software functions to ensure optimum operation in different environments and to eliminate the occurrence of nuisance alarms.

AutoLearn monitors the ambient environment and sets the most appropriate alarm thresholds (Alert, Action, Fire 1, Fire 2) during the commissioning process.

Referencing ensures external pollution to a protected environment does not interfere with the true smoke level being detected.



# VESDA LaserSCANNER Specifications

**Supply Voltage:** 18 to 30VDC

**Power Consumption @ 24VDC:** No Display or Programmer

	Aspirator @ 3000rpm		Aspirator @ 4200rpm	
	Quiescent	With Alarm	Quiescent	With Alarm
Power	5.8W	7.4W	9.6W	11.28W
Current	240mA	310mA	400mA	470mA

**Dimensions (WHD):**

350mm x 225mm x 125mm (13.8in x 8.9in x 4.9in)

**Weight:** 4.0kg (9lbs) including Display and Programmer modules

**Operating Conditions:**

Detector Ambient: 0°C to 39°C (32° to 103°F)  
 Sampled Air: -20° to 60°C (-4° to 140°F)  
 Humidity: 10-95% RH, non-condensing  
 Please consult your Vision Systems office for operation outside these parameters or where sampled air is continually above 0.05% obs/m (0.015% obs/ft) under normal operating conditions.

**Sampling Network:**

Aggregate pipe length: 200m (650ft)  
 Pipe Modelling Design Tool: ASPIRE™

**Pipe Size:** Minimum flow per pipe 15 litres/min.

External Diameter 25mm (1in)  
 Internal Diameter 15-21 mm (9/16in - 7/8in)

**Programmable Relays:** 7 or 12 Relays option

Contacts rated 2A @ 30VDC  
 Default: 7 Relays: NO/NC contacts Alert, Action, Fire 1, Fire 2, Maintenance, Urgent Fault & Isolate  
 Default: 12 Relays: 10 x NO, 2 x NO/NC contacts Alert, Action, Fire 1, Fire 2, Maintenance, Urgent Fault & Isolate, First Alarm Sector 1 to 4 and Scan

**IP Rating:** IP30

**Cable Access:**

8 x 25 mm (1 in) knockouts in various positions

**Cable Termination:**

Screw terminals 0.2-2.5sq mm (30-12 A.G.)

**Sensitivity Range:**

0.005 to 20% obs/m (0.0015 to 6% obs/ft)

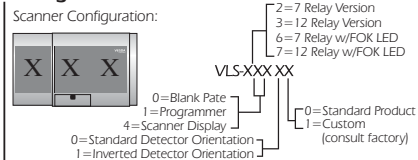
**Alarm Threshold Setting Range:**

Alert: 0.005 - 1.990% obs/m (0.0015 - 0.6218% obs/ft)  
 Action: 0.010 - 1.995% obs/m (0.0031 - 0.6234% obs/ft)  
 Fire 1: 0.015 - 2.00% obs/m (0.0046 - 0.625% obs/ft)  
 Fire 2: 0.020 - 20.00% obs/m (0.0062 - 6.25% obs/ft)\*  
 \*Limited to 12% obs/m (4% obs/ft) in UL mode

**Software Features:**

Event Log: Up to 18,000 events stored on FIFO basis.  
 AutoLearn: Minimum 15 minutes, maximum 15 days.  
 Recommended minimum period 1 day. During AutoLearn thresholds are NOT changed from pre-set values.  
 Referencing: Compensation for external ambient conditions  
 Four Alarm Levels (per sector pipe):  
 Alert, Action, Fire 1 & Fire 2  
 Two Fault Warning Levels: Maintenance and Major fault  
 Software Programmable Relays: 7 or 12  
 Maintenance Aids: Filter & Flow monitoring.  
 Event reporting via VESDAnet or Event Log.  
 Adaptive Scan Threshold: Detector selects the appropriate scan threshold automatically

**Ordering Information:**



- Remote Programmer VRT-100
- Recessed Mounting Kit (Optional) VSP-011
- Hand-held Programmer VHH-100
- 19in Sub Rack Configuration contact Vision Systems



**Australia and Asia**

Vision Fire & Security  
 Private Bag 215,  
 495 Blackburn Road,  
 Mount Waverley VIC, 3149  
 Australia  
 Ph +61 3 9211 7200  
 Fax +61 3 9211 7201  
 Freecall 1 800 700 203

**The Americas**

Vision Fire & Security  
 700 Longwater Drive,  
 Norwell, Massachusetts 02061,  
 USA  
 Ph 781 740 2223  
 Toll Free 800 229 4434  
 Fax 781 740 4433

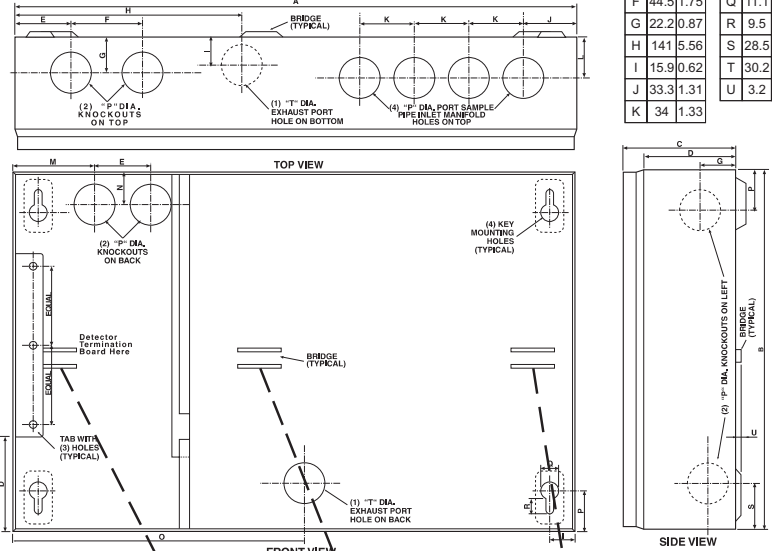
**Europe and the Middle East**

Vision Fire & Security  
 Vision House, Focus 31 Mark Road  
 Hemel Hempstead  
 Herts HP2 7BW UK  
 Ph +44 1442 242 330  
 Fax +44 1442 249 327

[www.vesda.com](http://www.vesda.com)

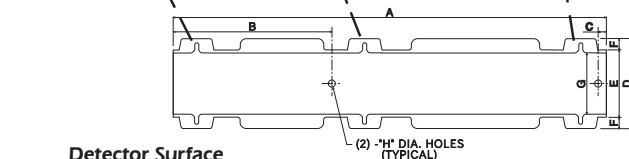
Dimensions		Dimensions	
	mm in		mm in
A	350 13.8	L	23.8 0.94
B	225 8.9	M	51 2
C	70 2.75	N	21 0.83
D	57 2.25	O	141 5.56
E	35 1.37	P	25.4 1
F	44.5 1.75	Q	11.1 0.44
G	22.2 0.87	R	9.5 0.37
H	141 5.56	S	28.5 1.12
I	15.9 0.62	T	30.2 1.19
J	33.3 1.31	U	3.2 0.125
K	34 1.33		

**Detector Mounting Box**

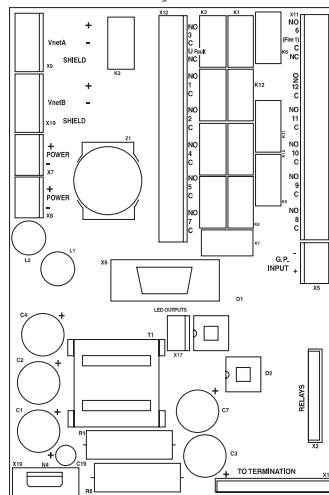


Dimensions	
	mm in
A	337.3 13.25
B	130.8 4.87
C	14.5 0.28
D	70.6 2.81
E	50.6 2.06
F	10.0 0.37
G	47.62 1.87
H	6.35 0.25

**Detector Surface Mounting Bracket**



**Detector Termination Card 12 Relay Version**



**Detector Termination Card 7 Relay Version**

