



1 Watt, 100Vrms Speaker with Conventional Base PSSB401

Head Office

Wellington

PO Box 35-063
Naenae
17 Eastern Hutt Rd
Wingate
Lower Hutt
Tel (04) 567-3229
Fax (04) 567-3644

www.pertronic.co.nz

sales@pertronic.co.nz
tech@pertronic.co.nz

Auckland Office

PO Box 15-867
New Lynn 0640
359 Onehunga Mall
Onehunga
Auckland
Tel (09) 633-0226
Fax (09) 633-0228



ISO 9001: 2000

International Standards
Certifications
QAC/R61/0051

Product Overview:

- The **PSSB401** is one of a range of 100V Line speakers (1.1W max) manufactured by Pertronic Industries Ltd.
- Integrates a 1W speaker; tapped line transformer and DC blocking capacitor mounted in an aesthetically pleasing acoustic enclosure, which includes a System Sensor B401 Conventional detector base.
- Used in conjunction with the Pertronic 20W or 50W, 100V line amplifiers, it provides a cost effective solution for speaker-based building evacuation systems that must comply with the NZS4512: 2003 or AS2220 Standards.
- The **PSSB401** has mini-jumpers for selecting one of 0.2W, 0.7W, or 1.1W power outputs.
- At 1.1W the **PSSB401** can reproduce the 'Evacuation' tone at a sound pressure level of 98dBA at 1 metre, when used with Pertronic 100V amplifiers.

Operation:

- The panel loop output and amplifier line output are connected to the **PSSB401** Speaker as shown in Figure 1.
- Terminals are provided on the speaker PCB for the 100V line connections.
 - The amplifier's line terminals '+' and '-' are connected to the corresponding **PSSB401** Line '+' and '-' terminals.
- Terminals for the circuit connections are on the B401 base.
 - The Circuit 'IN+' and 'OUT+' lines are connected to **B401 Base** Terminal 4, the 'IN M-' line is connected to **B401 Base** Terminal 2 and the 'OUT M-' line is connected to **B401 Base** Terminal 3.
- If the amplifier is not active, the 100V line is monitored by the application of an inverted DC voltage to the **PSSB401** Line '+' terminal.
- The **PSSB401** consumes no power in monitor mode.
- A 10kΩ, 1W monitor resistor is placed at the last **PSSB401**.
- When the Amplifier is active, the monitoring DC voltage is removed from the line output and the 100Vrms signal is applied, causing the **PSSB401** to operate.

Specification:

Dimensions:	When recessed:		
	Height below ceiling		31mm (including B401 base)
	Height above ceiling		35mm
	With surface mount extension cover		66mm
	Diameter of mounting flange		122mm

Colour: White.

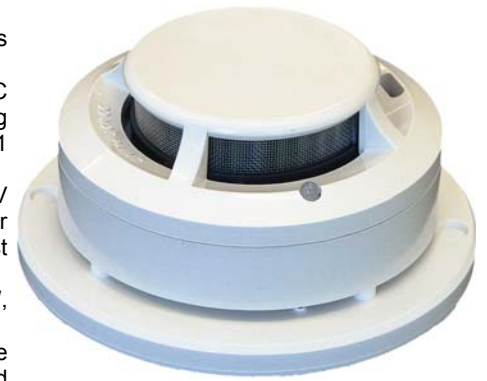
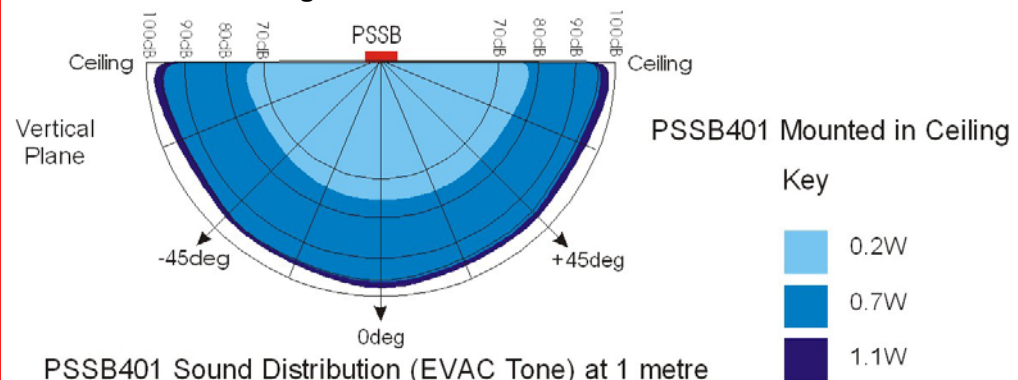
Sound Level Output:	Sound pressure level at 1.1W, 1m (peak ± 3dB)			
	Power Tap Selected:	0.2W	0.7W	1.1W
	Evacuation:	77.8dBA	98.7dBA	98.9dBA
	Alert:	64dBA	83.5dBA	85.3dBA

Frequency Response: 400Hz – 10Khz

Input Capacitor: 2µF, 63V Ceramic Disc

Maximum Line Voltage: 100Vrms

Sound Distribution Diagram:



Connection Diagram:

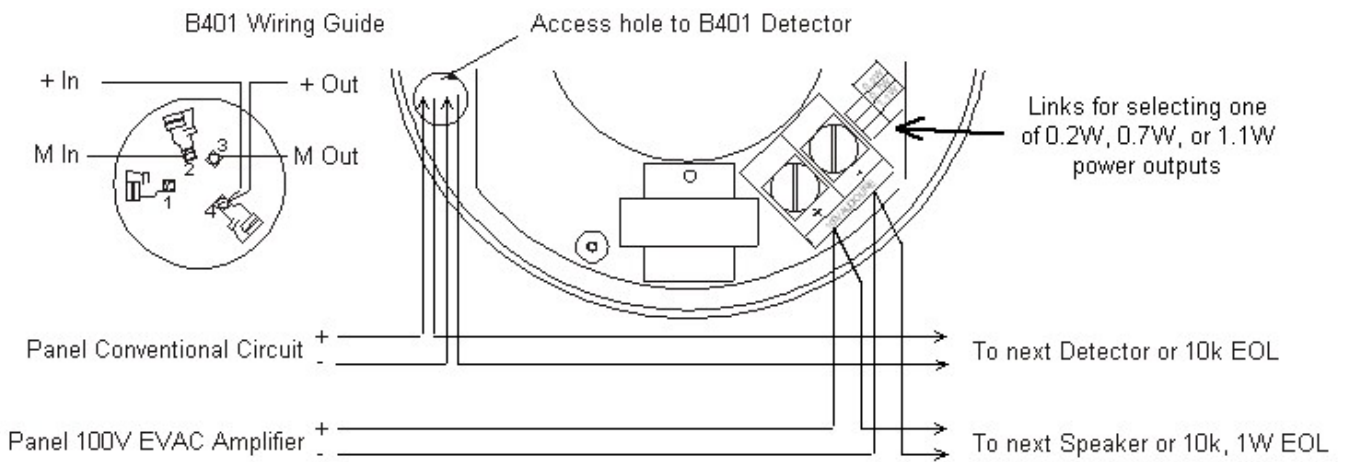


Figure 1

PSSB Drilling Template:

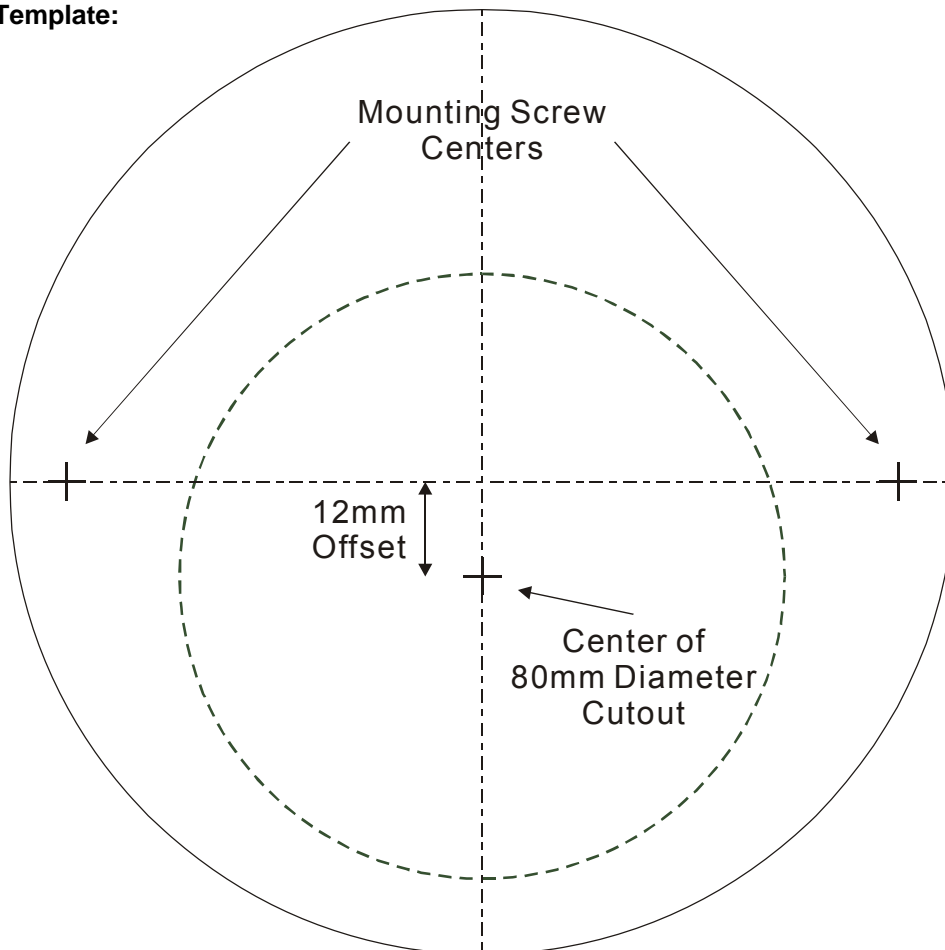


Figure 2

Product Code:

Description	Code
Pertronic Speaker with B401 Conventional Base	PSSB401

Head Office:

17 Eastern Hutt Rd, Wingate, Lower Hutt
 Tel (04) 567-3229 Fax (04) 567-3644

PERTRONIC INDUSTRIES LTD

www.pertronic.co.nz
 sales@pertronic.co.nz
 tech@pertronic.co.nz

Auckland Office:

359 Onehunga Mall, Onehunga, Auckland
 Tel (09) 633-0226 Fax (09) 633-0228