



# 1 Watt, 100Vrms Speaker with Analogue Addressable Base PSSB501

## Head Office

### Wellington

PO Box 35-063  
Naenae  
17 Eastern Hutt Rd  
Wingate  
Lower Hutt  
Tel (04) 567-3229  
Fax (04) 567-3644

www.pertronic.co.nz

sales@pertronic.co.nz  
tech@pertronic.co.nz

### Auckland Office

PO Box 15-867  
New Lynn 0640  
359 Onehunga Mall  
Onehunga  
Auckland  
Tel (09) 633-0226  
Fax (09) 633-0228



ISO 9001: 2000

International Standards  
Certifications  
QAC/R61/0051

## Product Overview:

- The **PSSB501** is one of a range of 100V Line speakers (1.1W max) manufactured by Pertronic Industries Ltd.
- Integrates a 1W speaker; tapped line transformer and DC blocking capacitor mounted in an aesthetically pleasing acoustic enclosure, which includes a System Sensor B501 Analogue Addressable detector base.
- Used in conjunction with the Pertronic 20W or 50W, 100V line amplifiers, it provides a cost effective solution for speaker-based building evacuation systems that must comply with the NZS4512: 2003 and AS2220 Standards.
- The **PSSB501** has mini-jumpers for selecting one of 0.2W, 0.7W, or 1.1W power outputs.
- At 1.1W the **PSSB501** can reproduce the 'Evacuation' tone at a sound pressure level of 98dBa at 1 metre, when used with Pertronic 100V amplifiers.

## Operation:

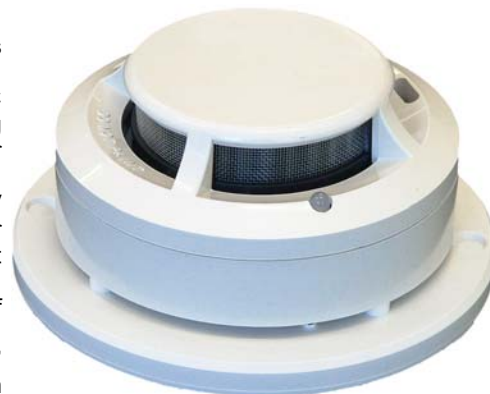
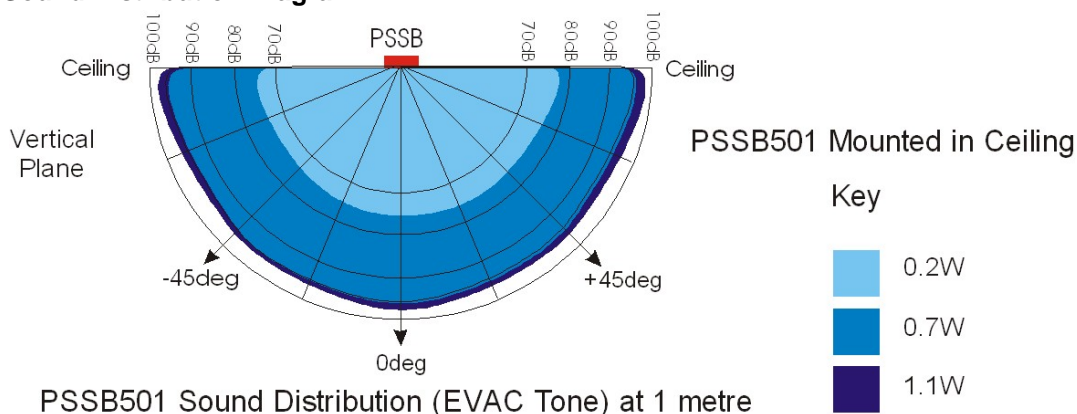
- The panel loop output and amplifier line output are connected to the **PSSB501** Speaker as shown in Figure 1.
- Terminals are provided for both analogue loop and 100V line connections.
- The Loop '+' and '-' terminals are connected to the corresponding **PSSB501** Loop '+' and '-' terminals.
- Similarly, the amplifier's line terminals '+' and '-' are connected to the corresponding **PSSB501** Line '+' and '-' terminals.
- If the amplifier is not active, the 100V line is monitored by the application of an inverted DC voltage to the **PSSB501** Line '+' terminal.
- The **PSSB501** consumes no power in monitor mode.
- A 10kΩ, 1W monitor resistor is placed at the last **PSSB501**.
- When the Amplifier is active, the monitoring DC voltage is removed from the line output and the 100Vrms signal is applied, causing the **PSSB501** to operate.

## Specification:

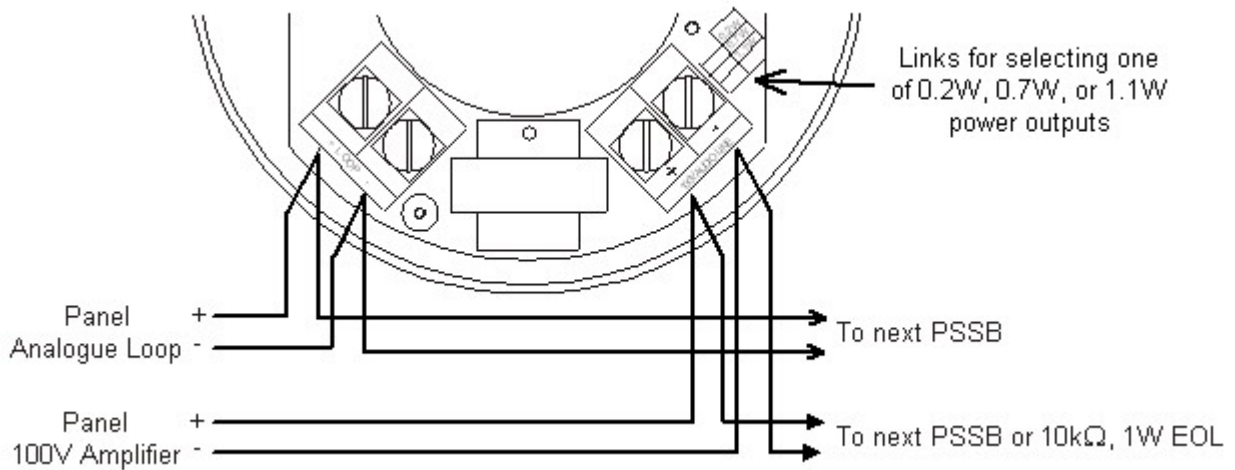
<b>Dimensions:</b>	When recessed:			
	Height below ceiling			31mm (including B501 base)
	Height above ceiling			35mm
	With surface mount extension cover			66mm
	Diameter of mounting flange			122mm
<b>Colour:</b>	White.			
<b>Sound Level Output:</b>	Sound pressure level at 1.1W, 1m (peak ± 3dB)			
	Power Tap Selected:	0.2W	0.7W	1.1W
	Evacuation:	77.8dBA	98.7dBA	98.9dBA
	Alert:	64dBA	83.5dBA	85.3dBA

**Frequency Response:** 400Hz – 10Khz  
**Input Capacitor:** 2µF, 63V Ceramic Disc  
**Maximum Line Voltage:** 100Vrms

## Sound Distribution Diagram:

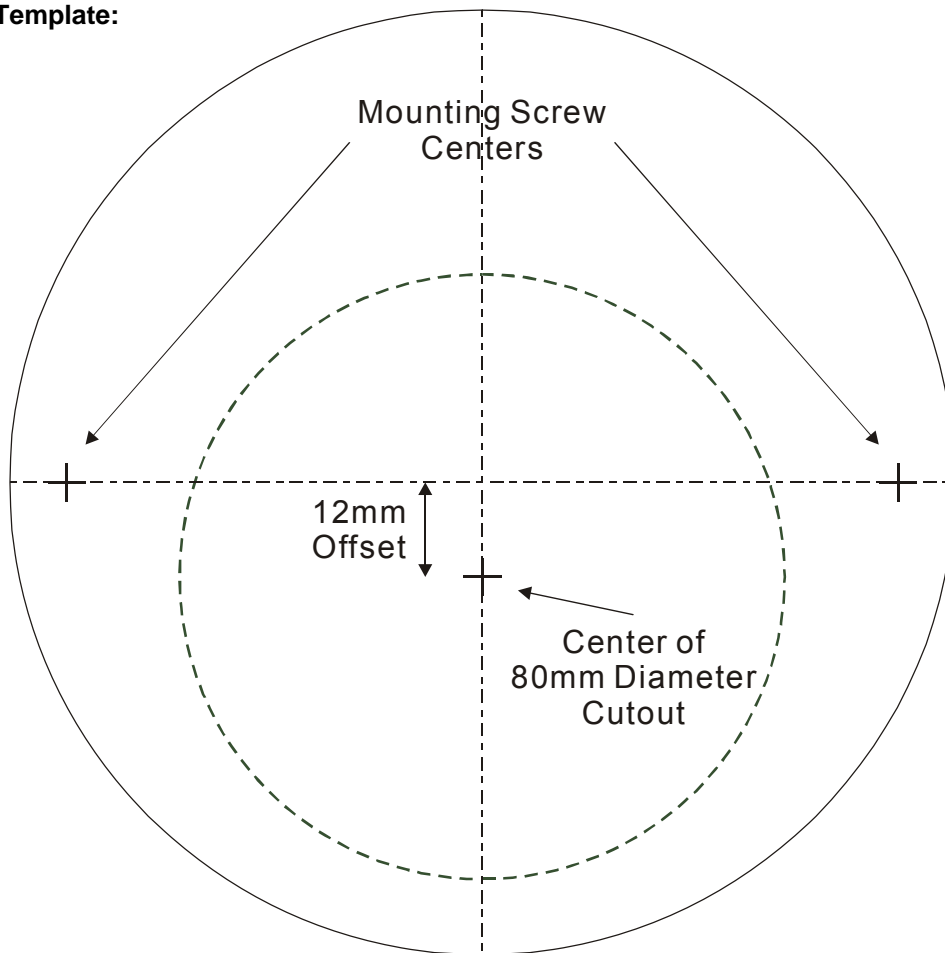


**Connection Diagram:**



**Figure 1**

**PSSB Drilling Template:**



**Figure 2**

**Product Code:**

Description	Code
Pertronic Speaker with B501 Analogue Base	PSSB501
Pertronic Speaker with B524IEFT Isolator Base	PSSB524IEFT

**PERTRONIC INDUSTRIES LTD**

**Head Office:**

17 Eastern Hutt Rd, Wingate, Lower Hutt  
 Tel (04) 567-3229 Fax (04) 567-3644

www.pertronic.co.nz  
 sales@pertronic.co.nz  
 tech@pertronic.co.nz

**Auckland Office:**

359 Onehunga Mall, Onehunga, Auckland  
 Tel (09) 633-0226 Fax (09) 633-0228

'Pertronic' and 'Firetronix' are registered trademarks of Pertronic Industries Ltd