

INSTALLATION AND MAINTENANCE INSTRUCTIONS

BEAMHKR

Heating Kit for use with the Reflector of Reflected Beam Smoke Detectors



3825 Ohio Avenue, St. Charles, Illinois 60174
1-800-SENSOR2, FAX: 630-377-6495
www.systemsensor.com

156-2557-002

ELECTRICAL SPECIFICATIONS

Voltage:	15 to 32 Volts
Current:	450mA max at 32 V (per reflector)
Power Consumption (per reflector):	
Nominal:	7.7 W at 24 V
Maximum:	15 W at 32 V

GENERAL DESCRIPTION

The BEAMHKR allows the reflector of the reflected beam smoke detectors to operate in environments prone to the formation of condensation. Condensation forming on the reflector may result in trouble or false alarm conditions. BEAMHKR will lessen the likelihood of condensation by maintaining the reflector at a temperature that is slightly higher than the surrounding air. The kit requires a 24V power supply. When used with the long-range reflector kit (BEAMLRK), it is necessary to purchase and install four BEAMHKR kits.

The kit includes the following parts:

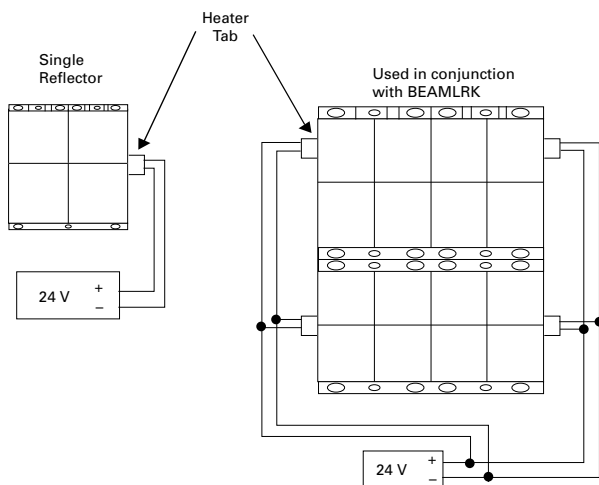
Qty. Description

- 1 Reflector Heater

MOUNTING AND WIRING INSTRUCTIONS

1. Insure that the back of the reflector(s) is clean and free of debris.
2. See Figure 1 below (front view) for recommended mounting orientation. See steps 3 and 4 for additional information.
3. Peel off the protective backing from the back of the heater. This exposes the Pressure Sensitive Adhesive.
4. Observing proper orientation (see Figure 2), attach the heater to the back of the reflector as shown. Insure that the four holes in the heater are aligned with the four small holes on the back of the reflector. In addition, insure that the heater tab is on the correct side of the reflector, as shown in Figure 1. Repeat for remaining three reflectors if using BEAMLRK.

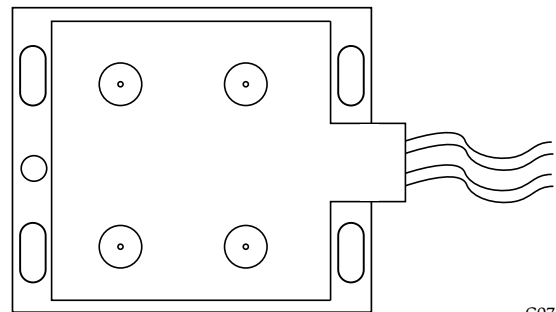
FIGURE 1



C0764-00

5. Mount the reflector(s). Refer to the installation manual provided with the beam smoke detector for instructions. For installations in conjunction with BEAMLRK, refer to BEAMLRK installation manual for proper mounting practices and considerations.
6. Attach heater wires to the power supply. For BEAMLRK, the four individual heaters are wired in a parallel. See Figure 1.

FIGURE 2



C0763-00

NOTES:

1. The heater is intended for the prevention of condensation only. It is not intended to increase or reduce the specified operating temperature range of the beam smoke detector.

THREE-YEAR LIMITED WARRANTY

System Sensor warrants its enclosed heating kit to be free from defects in materials and workmanship under normal use and service for a period of three years from date of manufacture. System Sensor makes no other express warranty for this heating kit. No agent, representative, dealer, or employee of the Company has the authority to increase or alter the obligations or limitations of this Warranty. The Company's obligation of this Warranty shall be limited to the repair or replacement of any part of the heating kit which is found to be defective in materials or workmanship under normal use and service during the three year period commencing with the date of manufacture. After phoning System Sensor's toll free number 800-SENSOR2 (736-7672) for a Return Authorization number, send defective units postage prepaid to: System Sensor, Repair Department, RA

_____, 6581 Kitimat Road, #6, Mississauga, Ontario, L5N-3T5. Please include a note describing the malfunction and suspected cause of failure. The Company shall not be obligated to repair or replace units which are found to be defective because of damage, unreasonable use, modifications, or alterations occurring after the date of manufacture. In no case shall the Company be liable for any consequential or incidental damages for breach of this or any other Warranty, expressed or implied whatsoever, even if the loss or damage is caused by the Company's negligence or fault. Some states do not allow the exclusion or limitation of incidental or consequential damages, so the above limitation or exclusion may not apply to you. This Warranty gives you specific legal rights, and you may also have other rights which vary from state to state.