

Head Office

Wellington

PO Box 35-063
Naenae
Lower Hutt 5041
17 Eastern Hutt Rd
Wingate
Lower Hutt 5019
Tel (04) 567-3229
Fax (04) 567-3644

www.pertronic.co.nz

sales@pertronic.co.nz
tech@pertronic.co.nz

Auckland Office

PO Box 15-867
New Lynn
Auckland 0640
359 Onehunga Mall
Onehunga
Auckland 1061
Tel (09) 633-0226
Fax (09) 633-0228



ISO 9001: 2000

International
Standards
Certifications
QAC/R61/0051

Product Overview:

The Pertronic FireMap® Display System has been designed with 'ease of use' as a paramount objective. Users are assigned security levels and passwords by the system manager to allow access to those features they need.

The system allows navigation via the hierarchical map navigation view which is always visible. In the event of an alarm, the relevant map is automatically shown, indicating the position of the device in alarm, along with the event details.

Features:

- ▶ Accepts single or multiple individual or networked Pertronic panel connections
- ▶ Connection via direct RS232, or Ethernet (LAN)
- ▶ Gateway Interface option for individual panels (RS485–LAN conversion)
- ▶ Commercial RS232–LAN converter option for network interfaces
- ▶ Imports F100A and F120A panel configuration text files for device data and location details
- ▶ Allows the user to carry out all map editing functions, including placement or movement of devices, using simple 'drag and drop' functionality
- ▶ Simple synchronization of panel configuration and graphics database
- ▶ Alarm Indication of devices not yet placed onto maps
- ▶ Displays precise positioning of individual addressable devices within maps
- ▶ Colour coded display of each device's current status
- ▶ Utilizes jpg or bmp format files for map creation
- ▶ User creation of zone boundaries
- ▶ Current view print option at all times
- ▶ Overall system status indication by panel
- ▶ Configurable 'Home' view page
- ▶ Different distinctive sounds for event types
- ▶ User 'note' leaving function for other users
- ▶ Allows individual device or zone isolation and reset from alarm
- ▶ Panel/s can be individually directly controlled and interrogated from the PC
- ▶ Multiple user access with security login

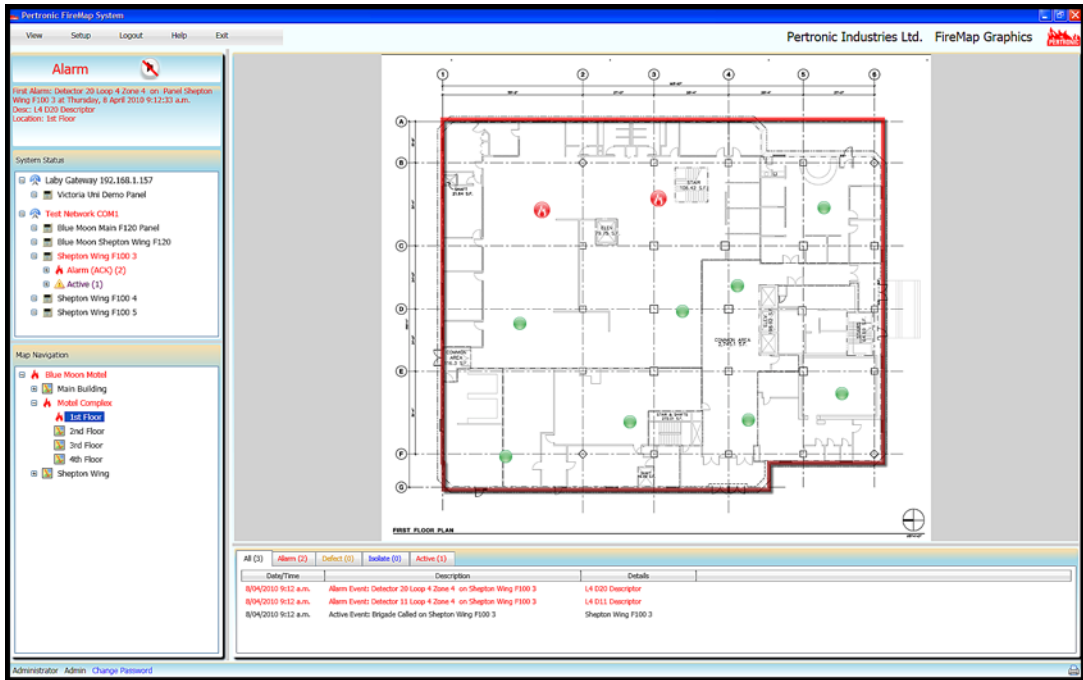
Minimum PC Specifications:

- ▶ 3GHz CPU, 2GB RAM, 80GB HDD, 1 x RS232, 2 x USB 2.0, DVD RW
- ▶ Windows XP Professional SP3, Windows 7
- ▶ TFT Screen 20" minimum, 1680 x 1050 (or higher) WSXGA (aspect ratio 1.6:1)

FireMap Graphics System Screen Examples:

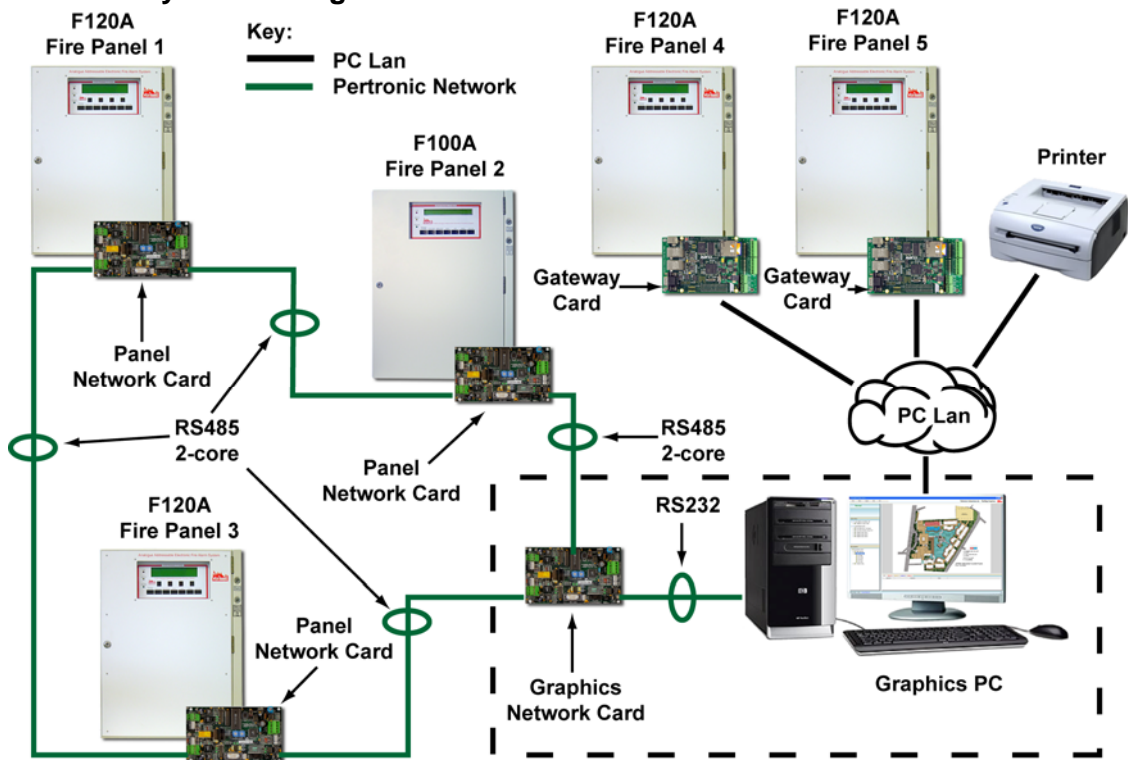


Typical Home View Page



Typical Alarm View Page

Typical Multi-Panel System Configuration:



Product Codes:

Code	Description
FIREMAP	FireMap® Graphics Display System software
NETCD-NCU	Network Card for Graphic Interface
NETCARD	Network Card - F100A/F120A Panels/LED Mimics
NETGATE	Network Gateway Interface

PERTRONIC INDUSTRIES LTD

Head Office:

17 Eastern Hutt Rd, Wingate, Lower Hutt 5019
 Telephone (04) 567-3229 Fax (04) 567-3644

www.pertronic.co.nz
 sales@pertronic.co.nz
 tech@pertronic.co.nz

Auckland Office:

359 Onehunga Mall, Onehunga, Auckland 1061
 Telephone (09) 633-0226 Fax (09) 633-0228

'Pertronic' and 'Firetronix' are registered trademarks of Pertronic Industries Ltd