

Apartment Module

(AMH-3)

Head Office

Wellington

PO Box 35-063
Naenae
Lower Hutt 5041
17 Eastern Hutt Rd
Wingate
Lower Hutt 5019
Tel (04) 567-3229
Fax (04) 567-3644

www.pertronic.co.nz

sales@pertronic.co.nz
tech@pertronic.co.nz

Auckland Office

PO Box 15-867
New Lynn
Auckland 0640
359 Onehunga Mall
Onehunga
Auckland 1061
Tel (09) 633-0226
Fax (09) 633-0228



ISO 9001: 2000

International
Standards
Certifications
QAC/R61/0051

Product Overview:

The Pertronic analogue addressable **Apartment Module** reduces the complexity of a 'Type 5' Fire system by combining all of the components required into one compact product:

- ▶ A Single Zone input circuit supports up to 15 conventional Smoke Detectors and unlimited Pertronic indicating Heat Detectors and indicating Manual Call-Points.
- ▶ An addressable monitored relay capable of switching 100V audio signals
- ▶ An in-built Isolator relay
- ▶ Internal and External Hush Button facility with adjustable Hush Time Delay
- ▶ Local Smoke detectors may operate in either Conventional or Analogue mode

Features:

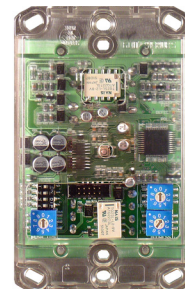
- ▶ Provides a 'local' alarm for operation of Smoke Detectors and a 'global' alarm for operation of Heat Detectors or Manual Call-Points. Conventional Smoke Detectors can initiate a global alarm provided they are not on the same Apartment Module as Smoke Detectors initiating a local alarm only.
- ▶ Provides a cost effective solution for common installations such as apartment buildings, rest homes, student and backpacker accommodation.
- ▶ Is compatible with current Pertronic Analogue Fire Control Panels – older panels may require a firmware upgrade: F100A: v4.54 or greater; F120A: v3.14 or greater.
- ▶ Uses two loop addresses - the first address for the conventional input circuit and the second address controls the monitored Sounder relay output.
- ▶ Each unloaded Apartment Module draws 7mA in the quiescent state – depending upon the detector loading, this allows for a maximum of 35 Apartment Modules per loop.
- ▶ Integrated within a Series 500 PDL flush plate, allowing easy mounting. A range of switch covers may be used to suit any décor.
- ▶ All controls and indicators are accessible by simply removing the front switch cover, eliminating the need to detach the Apartment Module from the wall or ceiling for servicing.



AA "Type 5" Apartment Module
-with Integrated or Remote Hush Button



AA "Type 5" Apartment Module
-without Integrated Hush Button
-supports Remote Hush Button



Specification:				
Electrical:	Operating Voltage Loop powered 15-32Vdc	Quiescent Current 7mA at 24Vdc	Alarm Current 18mA at 24Vdc	
Environmental:	Operating Temperature Range 0 to +40 °C		Humidity 10-95% RH (non-condensing)	
Mechanical: Semi-Flush Mount	Dimensions (H x W x D mm) 117 x 74 x 12	Weight 150g	Material ABS Plastic	Colour White

- ▶ **Isolator:** In-built isolator protects the loop from short circuits.

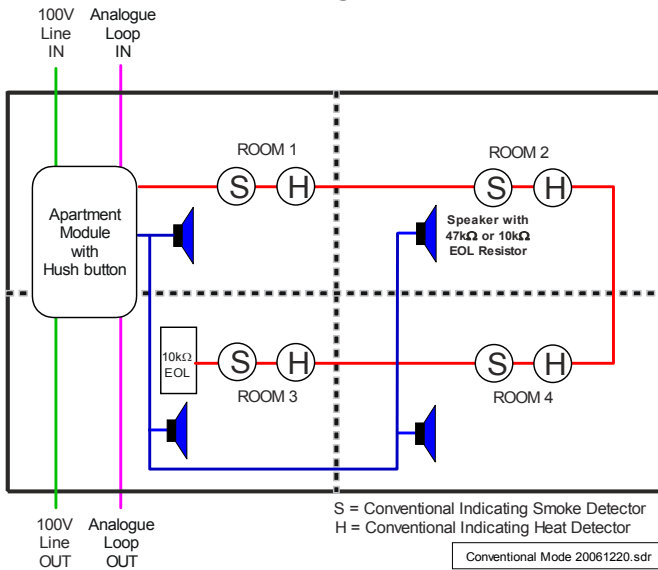
▶ Zone Input:

Mode 1: Conventional (Simulates the operation of a single Loop Responder circuit). Conventional Smoke Detectors, MCPs and Heat detectors may be used.

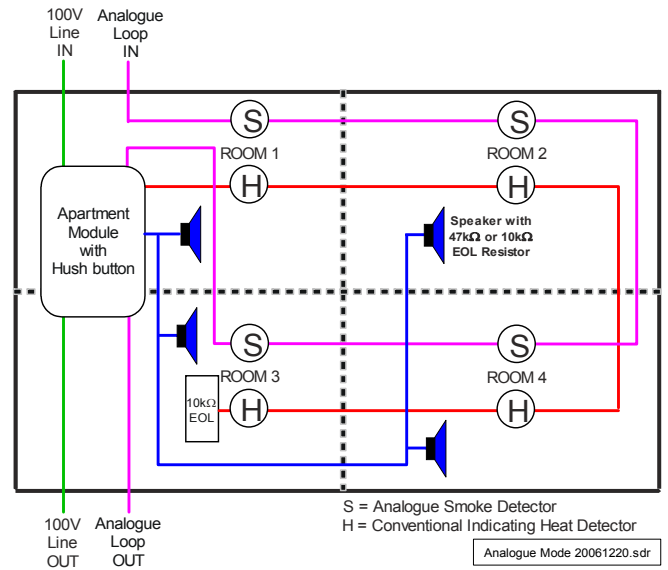
Mode 2: Analogue (simulates the operation of a single analogue input module). Only MCPs and Heat detectors may be used

- ▶ **Line Input/Output:** (Connects to the 100V Audio Line).
- ▶ The speaker output is a monitored change-over relay rated 2A @ 24Vdc or 0.5A @ 100Vrms.
- ▶ EOL monitoring requirements: 47kΩ, 0.25W or 10kΩ, 1W.
(1 spur with 47kΩ EOL or 10kΩ EOL) (2 spurs with 22kΩ EOL) (3 spurs with 33kΩ EOL).

Smoke Detector Operating Mode:

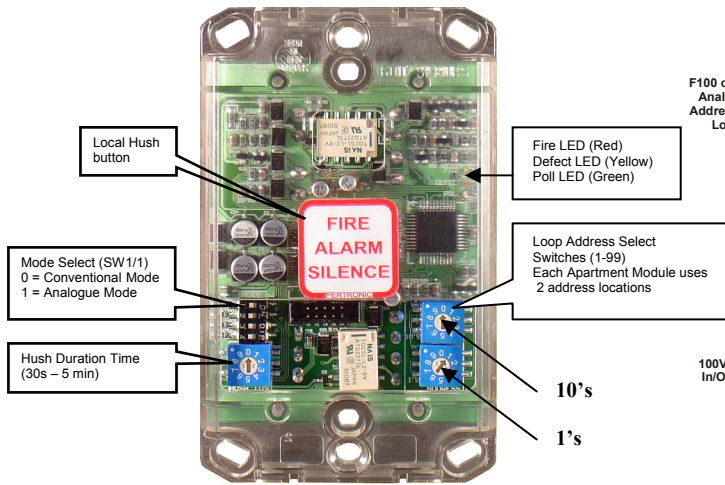


Conventional Smoke Mode

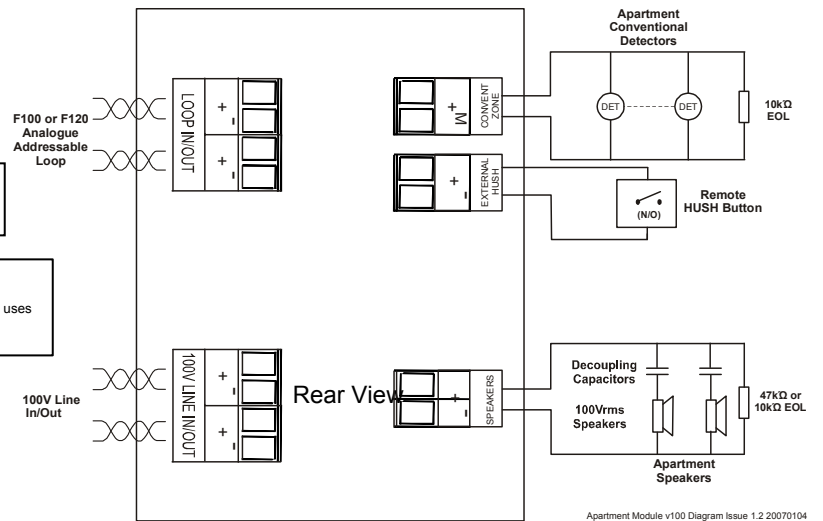


Analogue Smoke Mode

Apartment Module PCB Layout:



Front View



Rear View

Apartment Module v100 Diagram Issue 1.2 20070104

Product Codes:

Code	Description	NZFPA Listing No
AM-3	AA Type 5 Apartment Module - Non Hush	PI/635
AMH-3	AA Type 5 Apartment Module with Hush Button	PI/636
AMRH	Remote Hush Button	
PSSB401	Pertronic speaker with B401 Base	PI/642
PSSB501	Pertronic Speaker with B501 Analogue Base	PI/643
PSS1-R	Pertronic Sounder Speaker: 1W Flush - Red	PI/641
PSSB524IEFT	Pertronic Speaker with B524IEFT Isolator Base	PI/XX
PSS1-W	Pertronic Sounder Speaker: 1W Flush - White	PI/641

PERTRONIC INDUSTRIES LTD

Head Office:

17 Eastern Hutt Rd, Wingate, Lower Hutt 5019
Telephone (04) 567-3229 Fax (04) 567-3644

www.pertronic.co.nz

sales@pertronic.co.nz
tech@pertronic.co.nz

Auckland Office:

359 Onehunga Mall, Onehunga, Auckland 1061
Telephone (09) 633-0226 Fax (09) 633-0228

'Pertronic' and 'Firetronix' are registered trademarks of Pertronic Industries Ltd